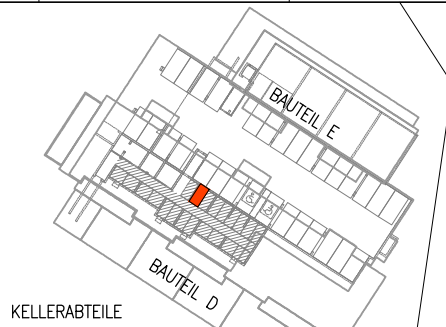
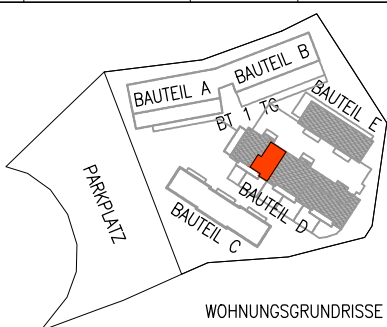


GHS WOHNBAU - MATREI I. O.

M 1:50 D-EG TOP 36 21.06.2023 Keller-
 abteil : 4,50m² Terrasse
 Balkon : 10,47m² Wohnnutz-
 fläche : 74,49m²



GHS

ARCHITEKTURBÜRO
 ARCH. DI ARTHUR STEINER
 ARCH. DI VANESSA DE BEER
 9971 MATREI I.O. / 8010 GRAZ
 email: office@steinerdebeer.com