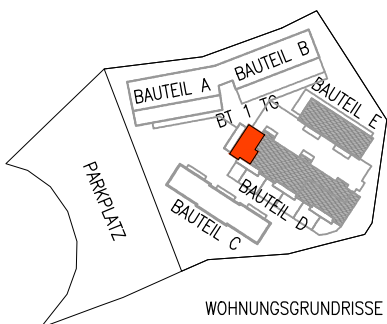
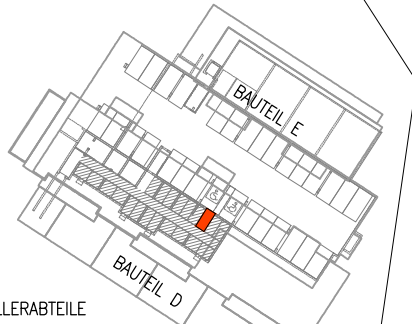
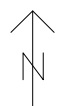


GHS WOHNBAU - MATREI I. O.

M 1:50 D-OG TOP 41 21.06.2023 Keller-
 abteil: **4,30m²** Terrasse
 Balkon: **9,92m²** Wohnnutz-
 fläche: **74,56m²**



WOHNUNGSGRUNDRISS



KELLERABTEILE

GHS

ARCHITEKTURBÜRO
 ARCH. DI ARTHUR STEINER
 ARCH. DI VANESSA DE BEER
 9971 MATREI I.O. / 8010 GRAZ
 email: office@steinerdebeer.com