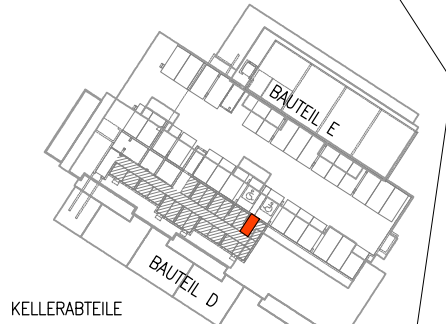
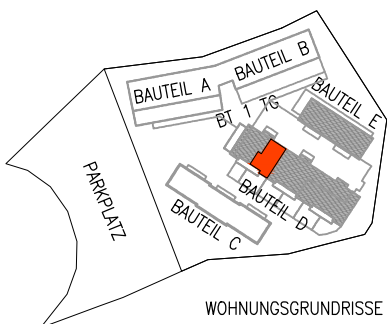


GHS WOHNBAU - MATREI I. O.

M 1:50 D-OG TOP 42 21.06.2023 Keller-
abteil : 4,60m² Terrasse
Balkon : 9,92m² Wohnnutz-
fläche : 74,44m²



GHS

ARCHITEKTURBÜRO
ARCH. DI ARTHUR STEINER
ARCH. DI VANESSA DE BEER
 9971 MATREI I.O. / 8010 GRAZ
 email: office@steinerdebeer.com