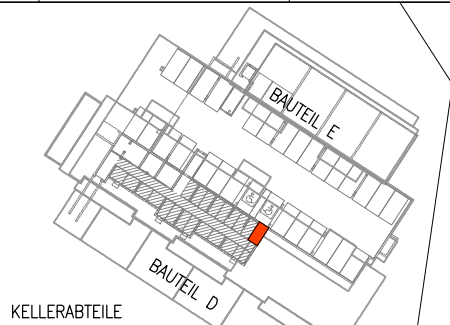
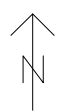
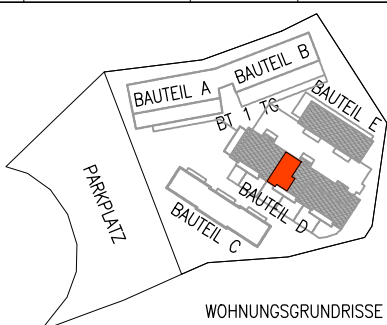


**GHS WOHNBAU - MATREI I. O.**

M 1:50    D-OG    TOP 43    21.06.2023    Keller-  
 abteil : 4,50m<sup>2</sup>    Terrasse  
 Balkon : 9,91m<sup>2</sup>    Wohnnutz-  
 fläche : 75,44m<sup>2</sup>



**GHS**

ARCHITEKTURBÜRO  
 ARCH. DI ARTHUR STEINER  
 ARCH. DI VANESSA DE BEER  
 9971 MATREI I.O. / 8010 GRAZ  
 email: office@steinerdebeer.com