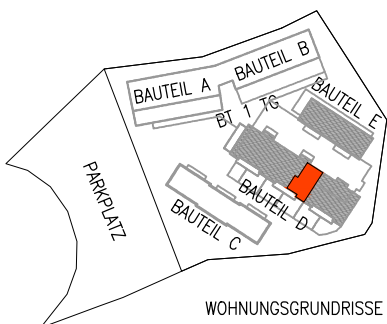
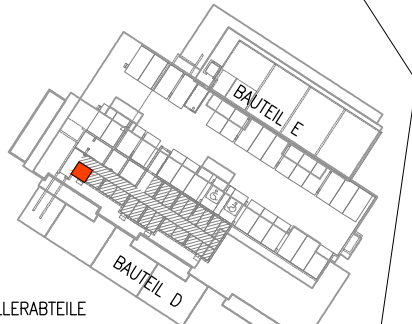


**GHS WOHNBAU - MATREI I. O.**

M 1:50	D-OG	TOP 44	21.06.2023	Keller- abteil : 4,60m <sup>2</sup>	Terrasse Balkon : 9,92m <sup>2</sup>	Wohnnutz- fläche : 75,30m <sup>2</sup>
--------	------	--------	------------	--	---	---



WOHNUNGSGRUNDRISS



KELLERABTEILE

**GHS**

ARCHITEKTURBÜRO  
 ARCH. DI ARTHUR STEINER  
 ARCH. DI VANESSA DE BEER  
 9971 MATREI I.O. / 8010 GRAZ  
 email: office@steinerdebeer.com