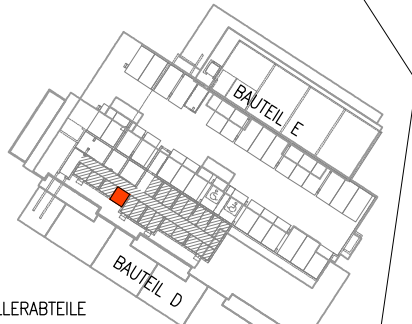
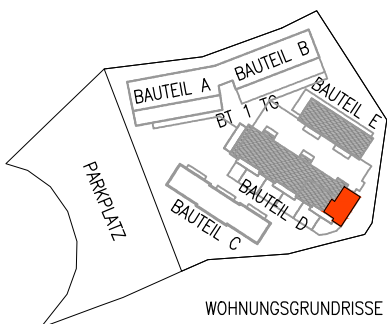


GHS WOHNBAU - MATREI I. O.

M 1:50 D-OG TOP 46 21.06.2023 Keller-
abteil : 4,50m² Terrasse
Balkon : 9,92m² Wohnnutz-
fläche : 75,24m²



GHS

ARCHITEKTURBÜRO
ARCH. DI ARTHUR STEINER
ARCH. DI VANESSA DE BEER
9971 MATREI I.O. / 8010 GRAZ
email: office@steinerdebeer.com