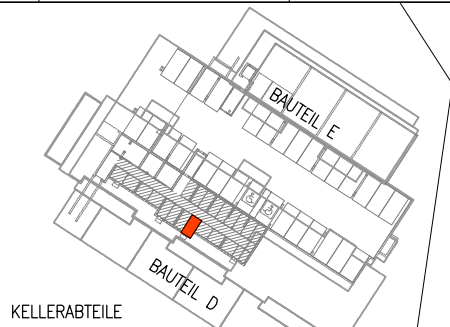
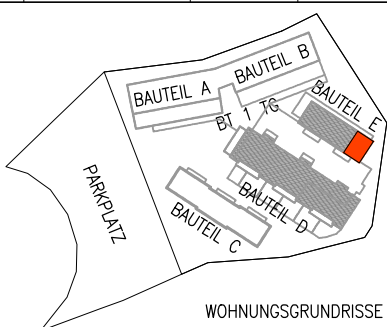


**GHS WOHNBAU - MATREI I. O.**

M 1:50	E-EG	TOP 50	21.06.2023	Keller- abteil: 4,50m²	Terrasse Balkon: 6,99m²	Wohnnutz- fläche: 51,09m²
--------	------	--------	------------	---------------------------	----------------------------	------------------------------



**GHS**

ARCHITEKTURBÜRO  
 ARCH. DI ARTHUR STEINER  
 ARCH. DI VANESSA DE BEER  
 9971 MATREI I.O. / 8010 GRAZ  
 email: office@steinerdebeer.com