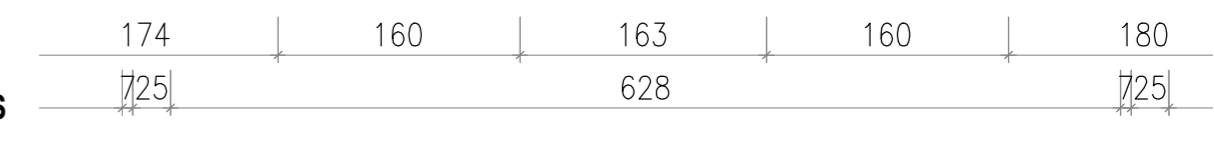
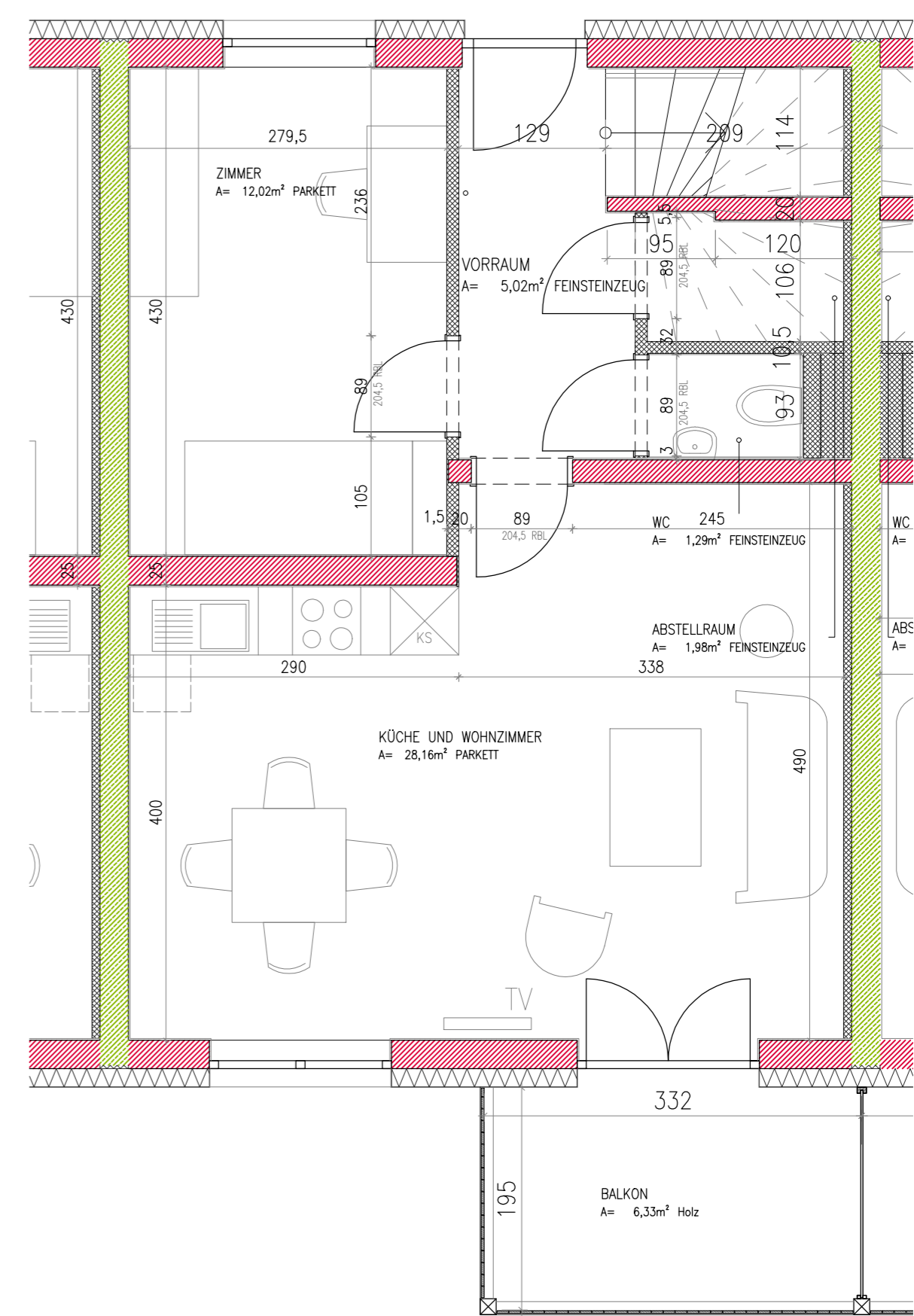
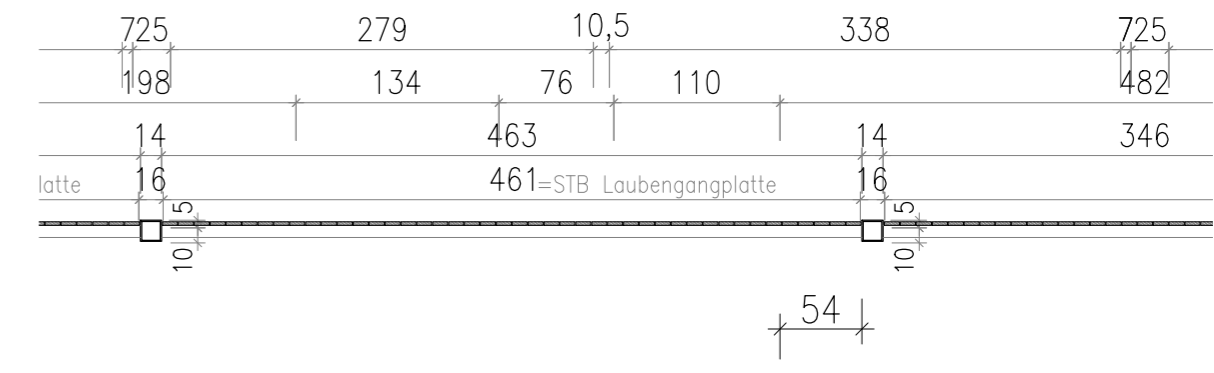
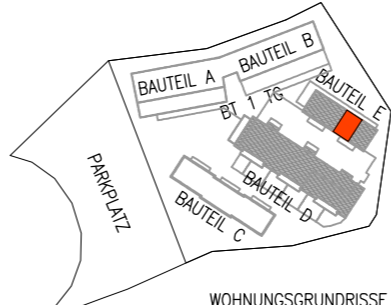
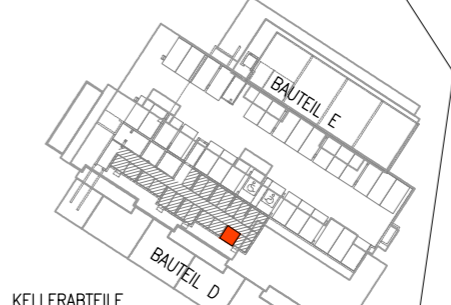


2.OBERGESCHOSS



1.OBERGESCHOSS

<b>GHS WOHNBAU - MATREI I. O.</b>								
M 1:50	E-10G-20G	TOP 53	21.06.2023	Keller- abteil : 4,50m <sup>2</sup>	Terrasse Balkon : 6,33m <sup>2</sup>	Wohnnutz- fläche : 93,69m <sup>2</sup>	 <p>ARCHITEKTURBÜRO          ARCH. DI ARTHUR STEINER          ARCH. DI VANESSA DE BEER          9971 MATREI I.O. / 8010 GRAZ          email: office@steinerdebeer.com</p>	
 <p>WOHNUNGSGRUNDRISS</p>				 <p>KELLERABTEILE</p>				