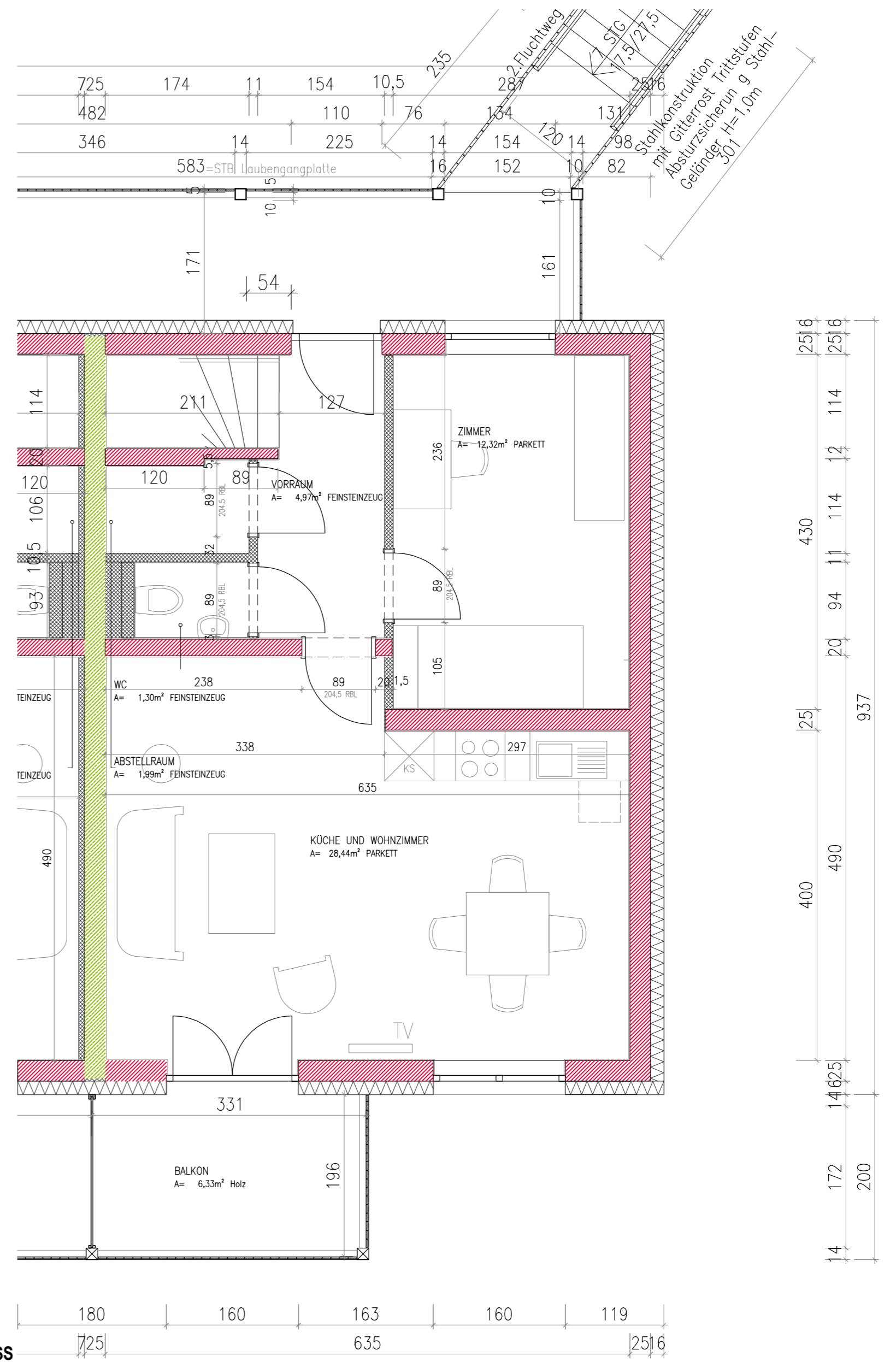


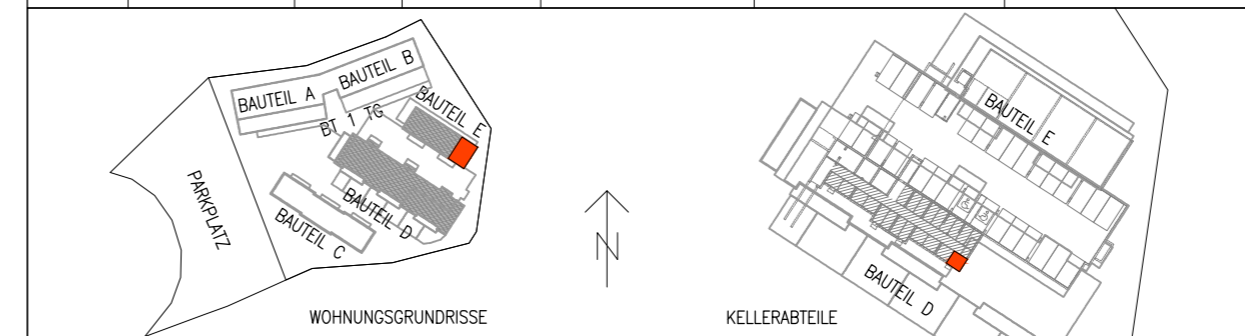
2.OBERGESCHOSS



1.OBERGESCHOSS

GHS WOHNBAU - MATREI I. O.

M 1:50	E-10G-20G	TOP 54	21.06.2023	Keller- abteil : 4,50m <sup>2</sup>	Terrasse Balkon : 6,33m <sup>2</sup>	Wohnnutz- fläche : 94,75m <sup>2</sup>
--------	-----------	--------	------------	--	---	---



ARCHITEKTURBÜRO  
 ARCH. DI ARTHUR STEINER  
 ARCH. DI VANESSA DE BEER  
 9971 MATREI I.O. / 8010 GRAZ  
 email: office@steinerdebeer.com