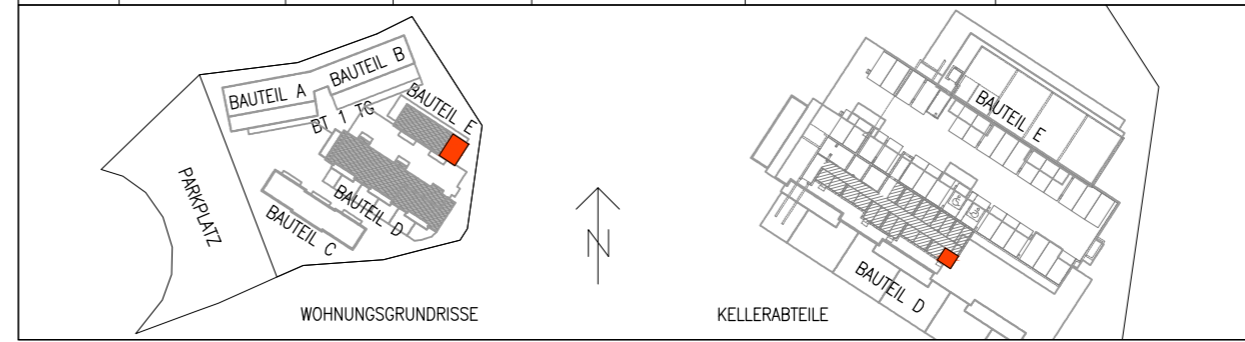


GHS WOHNBAU - MATREI I. O.

M 1:50	E-10G-20G	TOP 54	21.06.2023	Keller- abteil : 4,50m²	Terrasse Balkon : 6,33m²	Wohnnutz- fläche : 94,75m²
--------	-----------	--------	------------	----------------------------	-----------------------------	-------------------------------



ARCHITEKTURBÜRO
 ARCH. DI ARTHUR STEINER
 ARCH. DI VANESSA DE BEER
 9971 MATREI I.O. / 8010 GRAZ
 email: office@steinerdebeer.com